

Region of the Americas Update

Numbers at a glance *

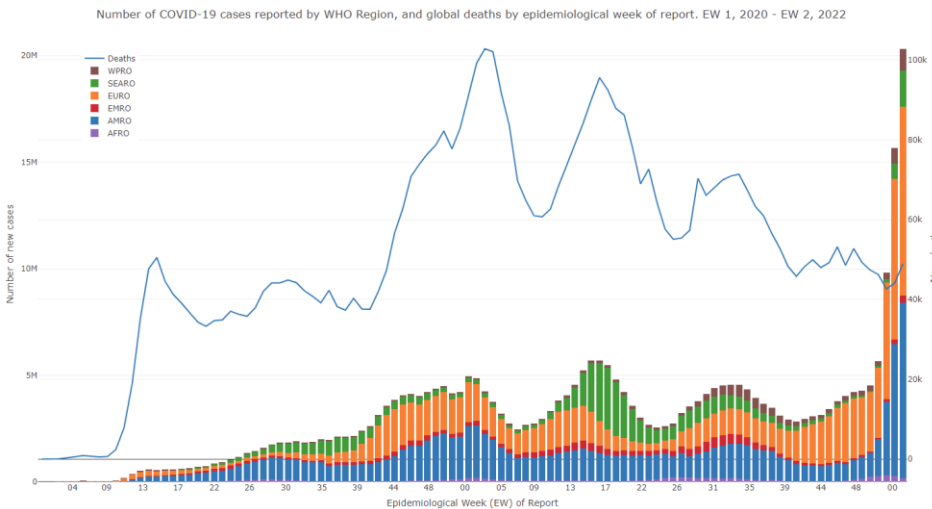
1,657,516 Additional cases in the last 24 hours
4,114 Additional deaths in the last 24 hours
7.8% 7-day change in cases
12.5% 7-day change in deaths

Region of the Americas

123,529,554 cases

2,456,283 deaths

Weekly Summary - Epidemiological Week (EW 2) 2022



Global

334,282,724 cases

5,555,432 deaths

Source: [WHO COVID-19 database](https://www.who.int/databases/who-covid-19-database)

Executive Summary

Globally, both COVID-19 cases and deaths continue to increase in almost all WHO regions with the exception of the AFRO region where both indicators decreased by 27% and 4.4% respectively compared to the previous week. In epidemiological week (EW) 2 (9-15 January) more than 20 million COVID-19 cases including 48,911 deaths were reported world-wide.

Overall, the COVID-19 epidemiological situation in the region of the Americas continues to be characterized by high rates of case notification in all subregions with more than 8 million new cases reported in EW 2 – a 40% relative increase compared to the previous week.

Deaths increased for the second consecutive week in 2022 across all subregions in the Americas this past week. More than 18,000 new deaths were registered in EW 2 – a 37% relative increase compared to the previous week.

Increases in hospitalizations and ICU admissions related to COVID-19 also continued across all subregions in EW 2. Among those with available data, increasing trends in hospitalizations and ICU admissions have been observed in 32/35 and 22/26 countries/territories respectively.

The Omicron variant of concern (VOC) has been detected in at least 41 countries and territories in the region of the Americas.

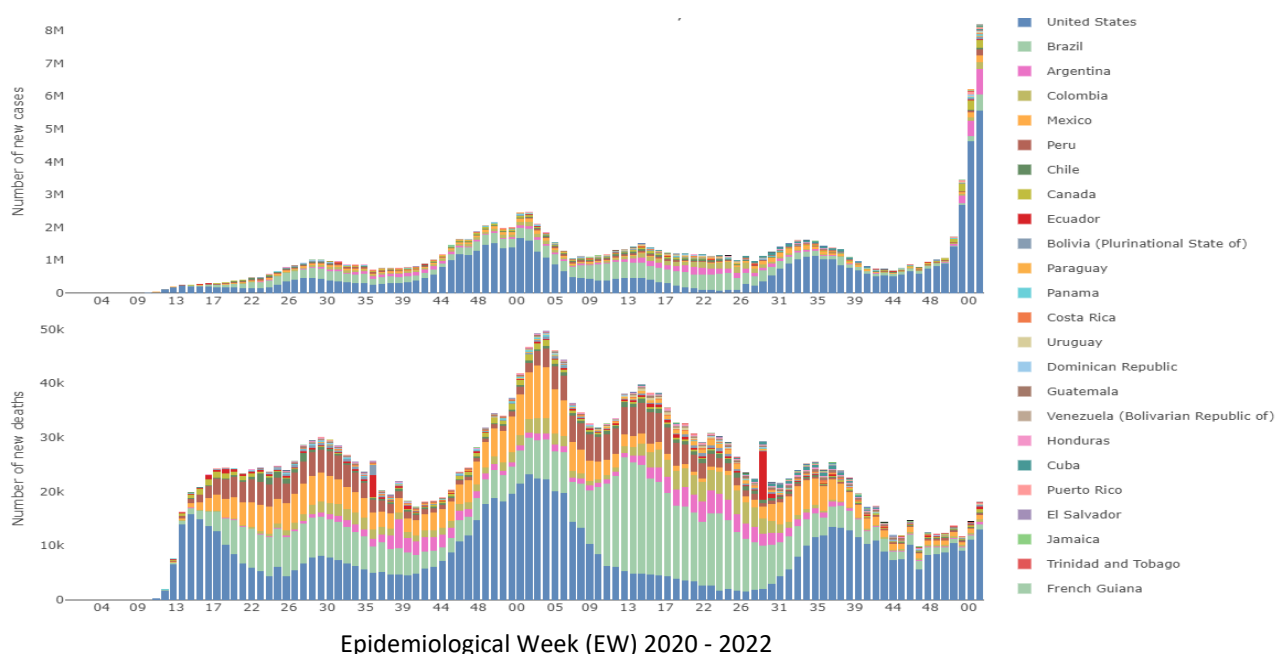
As of 19 January, 11 countries and territories in the region of the Americas reported a vaccine uptake of 70 or more per 100 persons among eligible population with a completed schedule [1]

[1] Number of people who received the last recommended dose of any vaccine or completed their schedule. This includes the second dose if the schedule is a two-dose schedule and the single dose in a single dose schedule.

*Numbers may vary due to differences in reporting times.

Weekly Summary of COVID-19 Situation in the Region of the Americas (EW 2, 2022)

Figure 1: Distribution of COVID-19 cases and deaths by epidemiological week (EW) of report & country/territory. Region of the Americas. EW 1, 2020 – EW 2 2022



Source: Data published by Ministries of Health and visualized by PAHO/WHO

Incidence: In the Region of the Americas, more than 8 million new COVID-19 cases were reported during EW 2 (9 – 15 January) – the highest number of weekly cases since the onset of the pandemic and 32% higher than the cases reported in the previous week (**Figure 1**). The United States of America (5.5 million cases) and Argentina (797K cases) continues to contribute the highest number of weekly cases, followed this week by Brazil (477K) where a 193% relative increase in cases was observed compared to the previous week. At the national level, Haiti and Martinique experienced the highest relative increase in weekly cases – 937% and 638% respectively – compared to the previous week. Both countries have some of the lowest vaccination uptake rates in the region with Haiti reporting 0.67 per 100 persons with a completed vaccine schedule [1] and Martinique reporting a rate of 34 per 100 persons as of 19 January.

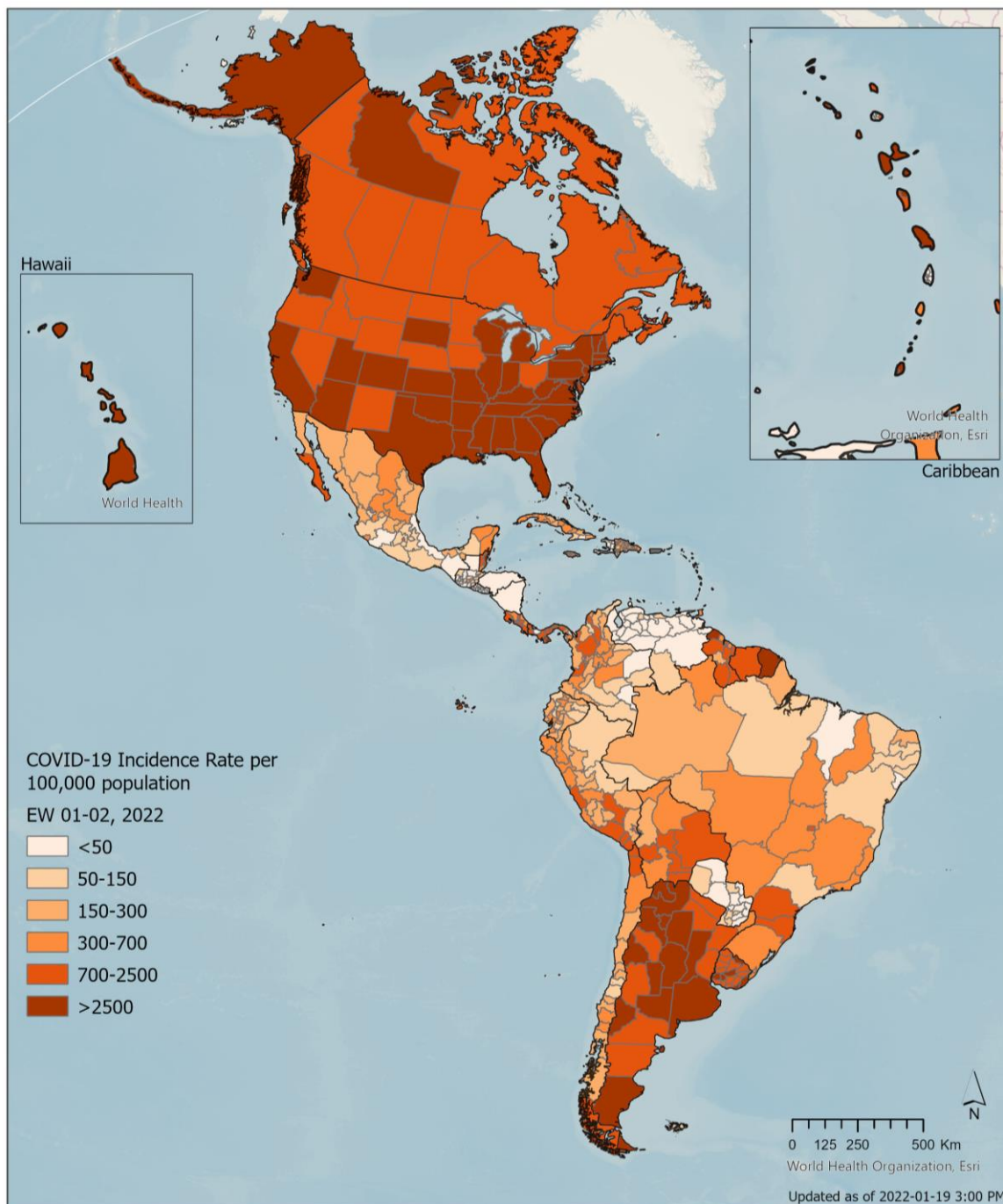
Table 1: Weekly change (%) in cases and deaths between EW 52 (2 – 8 Jan) and EW 1 (9 – 15 Jan) by subregion. Region of the Americas.

| Subregion | Total of Cases | Total of Deaths | Cases EW (1) (2-8 Jan) | Deaths EW (1) (2-8 Jan) | Cases EW(2) (9 - 15 Jan) | Deaths EW(2) (9 - 15 Jan) | % Variation of Cases | % Variation of Deaths |
|--------------------------------------|----------------|-----------------|------------------------|-------------------------|--------------------------|---------------------------|----------------------|-----------------------|
| Caribbean and Atlantic Ocean Islands | 2,798,915 | 29,643 | 174,645 | 312 | 224,625 | 384 | 28.60% | 23.10% |
| Central America | 2,417,697 | 46,285 | 45,767 | 68 | 88,876 | 141 | 94.20% | 107.40% |
| North America | 73,441,754 | 1,179,795 | 5,086,733 | 12,149 | 6,016,667 | 14,380 | 18.30% | 18.40% |
| South America | 43,266,288 | 1,196,725 | 894,985 | 2,023 | 1,886,643 | 3,251 | 110.80% | 60.70% |

Source: Data published by Ministries of Health and analyzed by PAHO/WHO

Compared to the previous week, both cases and deaths increased during EW 2 across all subregions with South America and Central America reporting the highest relative increases for both indicators compared to the previous week (**Table 1**). The Omicron Variant of Concern (VOC) has been detected from all 10 countries in South America and four out of seven countries/territories in Central America. Overall, the VOC has been detected in at least 41 countries and territories from the Region of the Americas to date.

Map 1: Incidence rate of COVID-19 cases per 100,000 population in the Region of the Americas reported in EW 01 and EW 02 (2022).



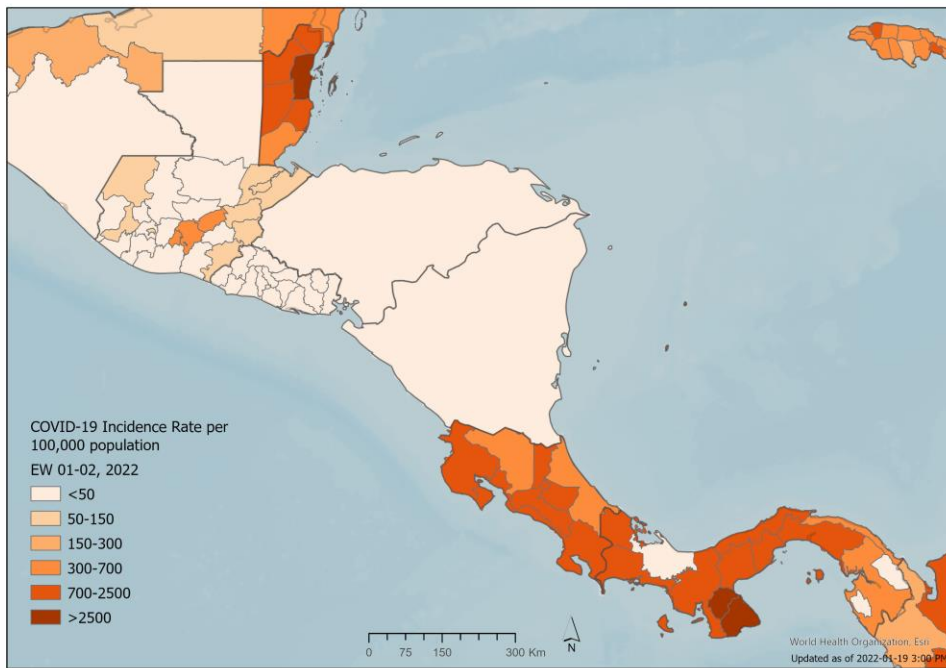
© Pan American Health Organization-World Health Organization 2021. All rights reserved. The designations employed and the presentation of the material in these maps do not imply the expression of any opinion whatsoever on the part of the Secretariat of the Pan American Health Organization concerning the legal status of any country, territory, city or area or of its authorities, or concerning the delimitation of its frontiers or boundaries. Dotted and dashed lines on maps represent approximate border lines for which there may not yet be full agreement.

The increasing trend for COVID-10 incidence observed regionally in EW 52 2021 – EW 01 2022 continued for the last two weeks.

In North America, all states in the United States and provinces in Canada reported over 700 cases per 100,000 population. In the United States most bottom half states reported over 2500 cases per 100,000 population, the highest rates in the region. Mexico also reported an increase in incidence with the following states reporting over 150 cases per 100,000 people: Coahuila, Zacatecas, San Luis Potosí, Colima, Yucatan, and Quintana Roo, and the following two states reporting over 700 cases per 100,000 people: Baja California Sur and Mexico D.F.

In South America, highest incidence rates were observed in Argentina, Uruguay, Guyana, and French Guiana, with some territories reporting over 2500 case per 100,000 population. Increases in incidence were observed in all countries in the sub-region compared with the previous two weeks.

Map 2: Incidence rate of COVID-19 cases per 100,000 population. Central America. Region of the Americas. EW 01 and EW 02 (2022).

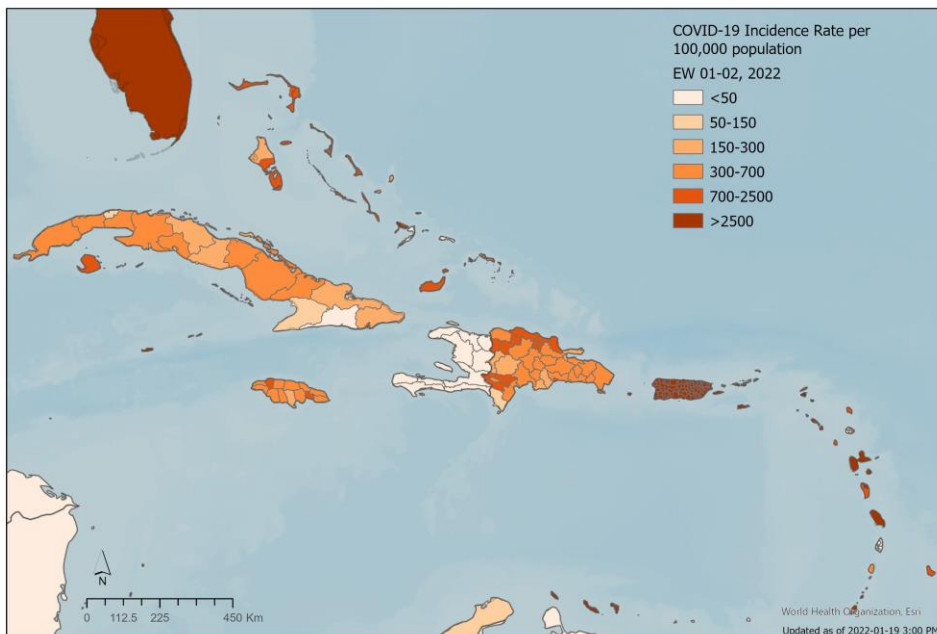


In Central America, Belize, Panama, and Costa Rica reported the highest rates over the last two weeks. Most territories in those three countries reported over 700 cases per 100,000 population, with Belize district in Belize as well as Los Santos and Herrera provinces in Panama reporting over 2500 cases per 100,000 people.



© Pan American Health Organization-World Health Organization 2021. All rights reserved. The designations employed and the presentation of the material in these maps do not imply the expression of any opinion whatsoever on the part of the Secretariat of the Pan American Health Organization concerning the legal status of any country, territory, city or area or of its authorities, or concerning the delimitation of its frontiers or boundaries. Dotted and dashed lines on maps represent approximate border lines for which there may not yet be full agreement.

Map 3: Incidence rate of COVID-19 cases per 100,000 population. Caribbean and Atlantic Ocean Islands. Region of the Americas. EW 01 and EW 02 (2022).



In the Caribbean, an overall increasing trend was observed again in most islands of the sub-region. Puerto Rico, Guadeloupe, Martinique, Dominica, the U.S. and the U.K. Virgin Islands, Saint-Martin, St-Kitts and Nevis, Grenada, Aruba, Curacao and Bonaire reported the highest rates in the sub-region (over 2500 cases per 100,000 population). Incidence of over 700 cases per 100,000 population was also observed in The Bahamas, the Dominican Republic, Barbados, the Cayman Islands, and Jamaica. In the Guiana shield, French Guiana and region 1 in Guyana reported the highest incidence rates, with over 2500 cases per 100,000 population. Suriname as well as regions 3, 4, 6, 7, 9 and 10 in Guyana reported over 700 cases per 100,000 population.



© Pan American Health Organization-World Health Organization 2021. All rights reserved. The designations employed and the presentation of the material in these maps do not imply the expression of any opinion whatsoever on the part of the Secretariat of the Pan American Health Organization concerning the legal status of any country, territory, city or area or of its authorities, or concerning the delimitation of its frontiers or boundaries. Dotted and dashed lines on maps represent approximate border lines for which there may not yet be full agreement.



Deaths: In the region of the Americas, only two out of 56 countries and territories did not report any COVID-19 deaths to date – Saint Pierre and Miquelon and the Falklands islands. In the past week, regional deaths increased for a second consecutive week with more than 18,000 new deaths reported in EW 2 – a 37% relative increase compared to the previous week. Weekly fatalities increased across all subregions with Central America reporting the highest relative increase (107%) compared to the previous week (**Table 1**).

At the national level, the British Virgin Islands, Costa Rica, Cuba, Curacao, Ecuador, Guatemala, Martinique, and Puerto Rico all experienced a 100% or more relative increase in deaths compared to the previous week. However, the trends for deaths should be interpreted with utmost caution considering the delays in data and lagging nature of the indicator. For example, per the analysis from Ecuador’s published daily cumulative data – the country experienced about a 24-fold increase in deaths during EW 2 (504) compared to EW 1 (21). However, according to their latest bulletin, of the total deaths reported to date, only 84 are actually attributed as having occurred in 2022. The rest were deaths from 2021 that the Ministry of Health retroactively accounted for and published in 2022.

Hospitalizations and ICU admissions: Increases in hospitalizations and ICU admissions related to COVID-19 also continued across all subregions in EW 2. Among those with available data, increasing trends in hospitalizations and ICU admissions have been observed in 32/35 and 22/26 countries/territories respectively.

Table 2: Countries and territories with >50% relative increase in COVID-19 hospitalizations between EW 1 (2 – 8 Jan) and EW 2 (9 – 15 Jan) along with vaccination coverage (per 100 person). Region of the Americas.

| Country | Hospitalization EW (1) (2-8 Jan) | Hospitalization EW (2) (9 - 15 Jan) | % Variation of Hospit. | Complete Schedule per 100 people [1] |
|------------------------------------|----------------------------------|-------------------------------------|------------------------|--------------------------------------|
| Montserrat | 1 | 3 | 200.00% | 27.54 |
| Turks and Caicos Islands | 2 | 6 | 200.00% | 47.58 |
| Cuba | 5,218 | 15,261 | 192.50% | 86.19 |
| Bermuda | 4 | 10 | 150.00% | 63.42 |
| Haiti | 42 | 96 | 128.60% | 0.67 |
| Paraguay | 184 | 378 | 105.40% | 42.17 |
| Suriname | 41 | 83 | 102.40% | 39.00 |
| Venezuela (Bolivarian Republic of) | 4,981 | 8,935 | 79.40% | 40.44 |
| Guadeloupe | 67 | 116 | 73.10% | 35.62 |
| Sint Maarten | 7 | 12 | 71.40% | 57.11 |
| Panama | 321 | 546 | 70.10% | 64.57 |
| Jamaica | 265 | 424 | 60.00% | 19.83 |
| Curaçao | 31 | 48 | 54.80% | 58.94 |
| Canada | 6,266 | 9,444 | 50.70% | 77.42 |

With regards to hospitalizations, 14 countries and territories out of 32 with increasing trends reported 50% or more increase compared to the previous week (**Table 2**). While majority (9/14) were in the Caribbean and Atlantic Ocean subregion, large increases were also observed from countries and territories in other subregions (e.g., Paraguay (212% increase), Suriname (102% increase), Venezuela (235% increase), and Panama (91% increase)).

The nine countries/territories with 50% or more increase in ICU admissions during EW 2 were distributed more evenly across sub regions – one was in Central America (Panama), two were in the southern cone (Paraguay and Uruguay), two were in the Guianese Shield (French Guiana and Suriname), and the rest were in the Caribbean subregion (Aruba, Bahamas, Guadeloupe, and Puerto Rico) (**Table 3**).

Table 3: Countries and territories with >50% relative increase in COVID-19 ICU admissions between EW 1 (2 – 8 Jan) and EW 2 (9 – 15 Jan) along with vaccination coverage (per 100 person). Region of the Americas.

| Country | ICU EW (1) (2-8 Jan) | ICU EW (2) (9 - 15 Jan) | % Variation of ICU | Complete Schedule per 100 people [1] |
|---------------|----------------------|-------------------------|--------------------|--------------------------------------|
| Guadeloupe | 7 | 14 | 100.00% | 35.62 |
| Uruguay | 33 | 64 | 93.90% | 76.98 |
| Panama | 36 | 69 | 91.70% | 64.57 |
| French Guiana | 8 | 15 | 87.50% | 25.39 |
| Bahamas | 4 | 7 | 75.00% | 37.89 |
| Puerto Rico | 48 | 80 | 66.70% | 87.83 |
| Paraguay | 51 | 82 | 60.80% | 42.17 |
| Suriname | 5 | 8 | 60.00% | 39.00 |
| Aruba | 6 | 9 | 50.00% | 74.03 |

Sources: Hospitalization data published by Ministries of Health and analyzed by PAHO/WHO

Vaccination data collected by [PAHO/WHO Immunization Unit](#)

[1] Number of people who received the last recommended dose of any vaccine or completed their schedule. This includes the second dose if the schedule is a two-dose schedule and the single dose in a single dose schedule.

| Sub-Region | Country/Territory | Cases | | | Deaths | | |
|--------------------------------------|--------------------------------------|-------------------|--------------------|---------------|------------------|------------------|---------------|
| | | 7 Day MA* Trend | Cummulative | 7day % change | 7 Day MA* Trend | Cummulative | 7day % change |
| North America | Canada | | 2,822,614 | -27% | | 31,827 | 74% |
| | Mexico | | 4,434,758 | -31% | | 301,789 | -8% |
| | United States of America (the) | | 67,437,353 | 0% | | 849,276 | 0% |
| | Subtotal | | 74,694,725 | | | 1,182,892 | |
| Central America | Belize | | 43,115 | 27% | | 611 | 100% |
| | Costa Rica | | 625,952 | 44% | | 7,425 | 95% |
| | El Salvador | | 123,577 | -43% | | 3,840 | 500% |
| | Guatemala | | 656,456 | 35% | | 16,191 | 300% |
| | Honduras | | 385,964 | 58% | | 10,458 | 0% |
| | Nicaragua | | 13,646 | 0% | | 219 | 0% |
| | Panama | | 591,843 | 93% | | 7,545 | 94% |
| Subtotal | | 2,440,553 | | | 46,289 | | |
| South America | Argentina | | 7,318,305 | 10% | | 118,420 | 174% |
| | Bolivia (the Plurinational State of) | | 774,227 | 17% | | 20,377 | 30% |
| | Brazil | | 23,211,894 | 91% | | 621,517 | 50% |
| | Chile | | 1,902,657 | 116% | | 39,431 | 25% |
| | Colombia | | 5,596,917 | 22% | | 131,268 | 124% |
| | Ecuador | | 629,507 | 112% | | 34,232 | -75% |
| | Paraguay | | 509,795 | 127% | | 16,866 | 302% |
| | Peru | | 2,668,224 | 149% | | 203,645 | 68% |
| | Uruguay | | 531,452 | 57% | | 6,253 | 132% |
| | Venezuela (Bolivarian Republic of) | | 458,731 | 232% | | 5,387 | -28% |
| Subtotal | | 43,601,709 | | | 1,197,396 | | |
| Caribbean and Atlantic Ocean Islands | Anguilla | | 2,187 | 48% | | 7 | 0% |
| | Antigua and Barbuda | | 5,346 | -64% | | 121 | 0% |
| | Aruba | | 31,338 | -44% | | 186 | 300% |
| | Bahamas (the) | | 31,549 | -26% | | 719 | -100% |
| | Barbados | | 36,386 | -2% | | 271 | -40% |
| | Bermuda | | 9,144 | 34% | | 110 | 0% |
| | Bonaire | | 5,366 | 7% | | 26 | 100% |
| | Cayman Islands | | 12,023 | -83% | | 14 | 0% |
| | Cuba | | 1,008,616 | 43% | | 8,348 | 200% |
| | Curacao | | 34,368 | -24% | | 207 | 25% |
| Caribbean and Atlantic Ocean Islands | Dominica | | 7,957 | -51% | | 48 | 0% |
| | Dominican Republic (the) | | 517,611 | -4% | | 4,274 | 114% |
| | Falkland Islands (the) | | 85 | 0% | | 0 | 0% |
| | French Guiana | | 71,476 | -37% | | 356 | 140% |
| | Grenada | | 10,427 | 1% | | 204 | 200% |
| | Guadeloupe | | 73,660 | 214% | | 835 | 0% |
| | Guyana | | 53,178 | 34% | | 1,101 | 87% |
| | Haiti | | 28,030 | 123% | | 780 | -100% |
| | Jamaica | | 116,084 | 4% | | 2,555 | 113% |
| | Martinique | | 71,193 | 50% | | 813 | 157% |
| | Montserrat | | 148 | -29% | | 1 | 0% |
| | Puerto Rico | | 423,221 | -19% | | 3,563 | 46% |
| | Saba | | 194 | -67% | | 0 | 0% |
| | Saint Barthelemy | | 2,952 | 1% | | 4 | 0% |
| | Saint Kitts and Nevis | | 5,065 | -42% | | 28 | 0% |
| | Saint Lucia | | 17,871 | 79% | | 316 | 20% |
| | Saint Martin | | 7,517 | 135% | | 40 | 0% |
| | Saint Pierre and Miquelon | | 583 | 19% | | 0 | 0% |
| | Saint Vincent and the Grenadines | | 6,604 | -93% | | 88 | -25% |
| Sint Eustatius | | 261 | -51% | | 0 | 0% | |
| Sint Maarten | | 8,798 | 61% | | 75 | 0% | |
| Suriname | | 66,633 | 29% | | 1,221 | 214% | |
| Trinidad and Tobago | | 102,024 | -3% | | 3,224 | -19% | |
| Turks and Caicos | | 5,195 | -23% | | 30 | 200% | |
| Virgin Islands (UK) | | 5,449 | -58% | | 47 | 0% | |
| Virgin Islands (US) | | 14,028 | -52% | | 94 | 300% | |
| Subtotal | | 2,792,567 | | | 29,706 | | |
| Total | | | 123,529,554 | | | 2,456,283 | |

* 7 Day Moving Average

Legend

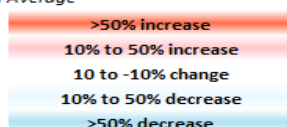


Table notes on the next page.

NOTES: Case and death counts may include both confirmed and probable classifications depending on the reporting Member State.

- Antibody tests, including rapid diagnostic tests (RDTs) based on antibody detection, are not recommended for use by PAHO/WHO in clinical diagnosis. Antigen-detecting RDTs may be used following the WHO 6 October 2021 Guidance, available at: <https://bit.ly/3EK44fn>.
- Data is updated on a weekly basis for the British Virgin Islands, Guadeloupe, Martinique, Nicaragua, Saint Barthelemy, Saint Martin, and Saint Pierre and Miquelon.
- As of 18 January 2020, the previously aggregated Bonaire, Saba and Sint Eustatius are now being presented separately in the table.
- *A dispute exists between the Governments of Argentina and the United Kingdom of Great Britain and Northern Ireland concerning sovereignty over the Falkland Islands (the) (Malvinas)

Argentina: On 14 March 2021, due to daylight savings time observed in Eastern Standard Time zone, the Argentina data is no longer published by 3:00PM EST same day and is henceforth included in the following day table. Between 22 February and 14 March 2021, the data had corresponded to the same date.

Bahamas: According to the latest Bahamas Ministry of Health (MoH) publication, there are a total of 37 additional deaths under investigation, available at: <https://bit.ly/3wh84Aq>.

Ecuador: According to a 6 September Ecuador Ministry of Public Health press release, only cases confirmed by RT-PCR will be reported; previously, cases who tested positive by either RT-PCR or RDTs were reported, resulting in the exclusion of 8,956 cases. Available at: <https://bit.ly/3h2EWEA>.

El Salvador: Cumulative cases and deaths as published by the Government of El Salvador: <https://covid19.gob.sv/>. The government presents a retroactively adjusted epidemiological curve of daily cases on the same dashboard.

Jamaica: According to the latest Jamaica Ministry of Health and Wellness press release, there are a total of 378 additional deaths under investigation, available at: <https://bit.ly/3qAwlJo>.

Mexico: On 1 June 2021, the Mexico Ministry of Health reported 4,272 deaths in 24 hours. Of these, 3,924 were reported in 2020 and the remaining were reported in 2021. Available at: <https://bit.ly/3pfdMA8>.

Nicaragua: Please note there are discrepancies with the data published by the Citizen's Observatory COVID-19 Nicaragua as of 15 December 2021. Available at: <https://bit.ly/3pw7ZVR>.

Peru: Aggregated case total as reported by the Peru MoH; latest disaggregated data available is 765,131 by RT-PCR + 791,792 by antigen tests + 955,866 by other RDTs. Antibody tests, including RDTs based on antibody detection, are not recommended for use by PAHO/WHO in clinical diagnosis. Antigen-detecting RDTs may be used following the WHO 11 September 2020 Guidance, available at: <https://bit.ly/3fjVKTm>. On 31 May 2021, the Government of Peru announced that, after revision, the death toll was 180,764 deaths as of 22 May 2021, available at: <https://bit.ly/3fYGj8V>. The number of cumulative deaths reported prior to the revision, on 30 May, was 69,342, available at: <https://bit.ly/3pkar2U>.

Puerto Rico: Aggregated case total as reported by the Puerto Rico Department of Health (DoH) 242,972 were positive by RT-PCR and 180,249 were positive by antigen tests; previously, cases who tested positive by either RT-PCR or serological RDTs were reported, resulting in the exclusion of 33,965 cases. Available at: <https://bit.ly/3AXY7KU>.

United States of America: Case and death counts include both confirmed and probable classifications, as published on the U.S. Centers for Disease Control and Prevention (US CDC) website on 19-January. Excludes American Samoa, Federated States of Micronesia, Guam, Commonwealth of the Northern Marianas, Puerto Rico, Palau, Republic of Marshall Islands and the United States Virgin Islands. Case and death counts may differ from other US CDC data sources because these are provisional counts which are subject to change, including updates to data reported previously, adjustments can occur. Sources: <https://bit.ly/2RSpap5> and <https://bit.ly/2RVI2n6>.

Uruguay: According to the latest Uruguay Ministry of Public Health report, the total notes 31 positive cases reported in the last 24 hours were excluded from the total. Available at: <https://bit.ly/3A7MRf2>.

DATA ADJUSTMENTS: Differences in the total number of cases and/or deaths and respective % increases reflect the following adjustment(s).

| ISO3_CODE | Adjusted Date | Cases | Deaths | Source |
|-----------|---------------|----------|--------|---|
| ARG | 2022-01-13 | 6664717 | 117670 | https://bit.ly/3GL6LyT |
| ARG | 2022-01-14 | 6793119 | 117808 | https://bit.ly/3FFSZvW |
| ARG | 2022-01-16 | 7029624 | 117989 | https://bit.ly/3FGqJJV |
| ARG | 2022-01-17 | 7094865 | 118040 | https://bit.ly/3ldSeMz |
| BHS | 2022-01-17 | 31105 | | https://bit.ly/3tzVw8M |
| BOL | 2022-01-15 | 725459 | 20149 | https://bit.ly/3nASHR6 |
| BOL | 2022-01-16 | 749070 | 20238 | https://bit.ly/3qFQHJm |
| BOL | 2022-01-17 | 754335 | 20254 | https://bit.ly/3qCzXCs |
| BRA | 2022-01-16 | 22975723 | 620971 | https://bit.ly/3ldrwne |
| CAN | 2022-01-15 | 2720411 | 31323 | https://bit.ly/3FJQ6u5 |
| CAN | 2022-01-16 | 2749307 | 31466 | https://bit.ly/3FJQ6u5 |
| CAN | 2022-01-17 | 2777845 | 31544 | https://bit.ly/3FJQ6u5 |
| COL | 2022-01-16 | 5511479 | 130860 | https://bit.ly/3tLHAZc |
| CRI | 2022-01-16 | 614593 | 7413 | https://bit.ly/3ljLvjZ |
| CRI | 2022-01-17 | 617762 | 7415 | https://bit.ly/3ljLvjZ |
| DMA | 2022-01-16 | 7957 | 48 | https://bit.ly/3tBC9fv |
| DMA | 2022-01-17 | 7957 | 48 | https://bit.ly/3tBC9fv |
| ECU | 2022-01-17 | 625059 | 34227 | https://bit.ly/3fyIjWE |
| GUT | 2022-01-16 | 651774 | 16175 | https://bit.ly/3rx4lXk |
| HND | 2022-01-15 | 384077 | 10454 | https://bit.ly/3nCkfp9 |
| HND | 2022-01-16 | 384077 | 10454 | https://bit.ly/3nCkfp9 |

| | | | | |
|-----|------------|----------|--------|---|
| HND | 2022-01-17 | 384077 | 10454 | https://bit.ly/3nCkfp9 |
| HTI | 2022-01-15 | 27973 | | https://bit.ly/33G2Y7n |
| HTI | 2022-01-13 | 27819 | | https://bit.ly/3rxkN0u |
| JAM | 2022-01-17 | 113438 | 2536 | https://bit.ly/3lhEaSk |
| PRY | 2022-01-16 | 497336 | 16812 | https://bit.ly/3nAMI3W |
| TCA | 2022-01-16 | 5025 | | https://bit.ly/34PB7SH |
| TCA | 2022-01-17 | 5110 | | https://bit.ly/3FLpRDW |
| URY | 2022-01-16 | 500267 | 6225 | https://bit.ly/3qDQLZW |
| URY | 2022-01-17 | 512841 | 6243 | https://bit.ly/3GETRT5 |
| USA | 2022-01-15 | 64748654 | 844130 | https://bit.ly/3AoKBQR |
| USA | 2022-01-16 | 65094195 | 845103 | https://bit.ly/3AoKBQR |
| USA | 2022-01-17 | 65406857 | 845551 | https://bit.ly/3AoKBQR |
| VEN | 2022-01-17 | 455023 | 5380 | https://bit.ly/3rN8uO7 |