

# Haiti Earthquake

## Situation Report #4

23 August 2021 8:00pm

\*New information in blue

### HIGHLIGHTS

- As a result of the 7.2 magnitude earthquake on August 14, 2021, according to Haiti's Civil Protection agency (DGPC), 2,207 people have died, 12,268 people were injured, and 320 are missing.<sup>2</sup>
- In the most affected departments – Sud, Grand'Anse and Nippes – around 53,000 houses were destroyed and more than 77,000 damaged.
- Rapid assessments reported 59 health facilities affected in Grand'Anse, Nippes and Sud Departments: 27 severely damaged and 32 slightly damaged.
- In the affected departments, health sector evaluators are carrying out assessments to gather data on injured patients (hospitalizations, types of injuries and demographics) and the degree of damage to health facilities and needs.
- Logistics and security challenges continue limiting the delivery of supplies, deployment of personnel to affected areas and the transfer of patients to hospitals that are not overwhelmed.<sup>3</sup>
- Health sector needs include: medical personnel, medicines, supplies and stock management, mental health and psychosocial support initiatives, implementation of preventive and control measures for communicable diseases, WASH operations in health facilities and shelters, rehabilitation of injured patients, among others.

### IN NUMBERS

**~2M Exposed**<sup>1</sup>

**Grand'Anse: 440,417**

**Nippes: 297,348**

**Sud: 744,897**

**Ouest: 491,858**

**Sud-Est: 201, 419**

**2,207 Deaths**

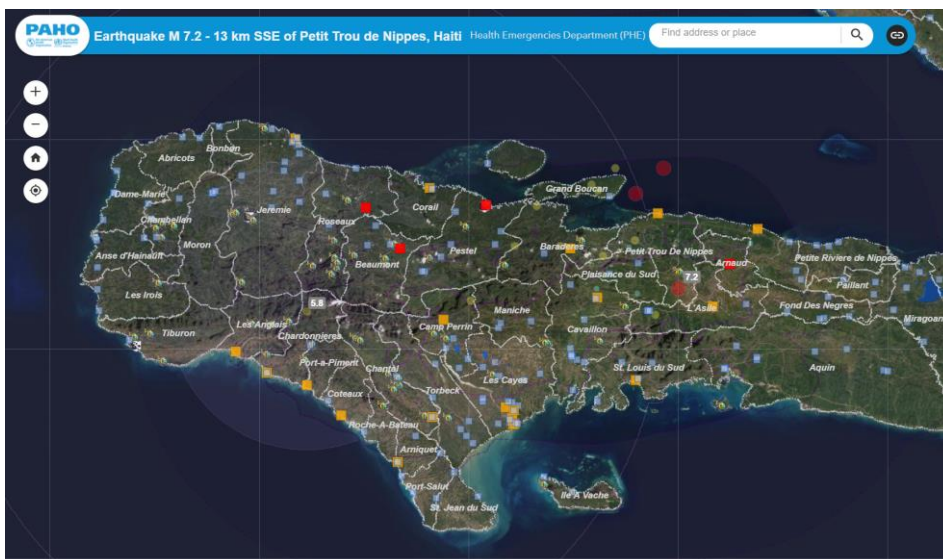
**12,268 Injured**

**320 Missing**

**59 Damaged**

**Health facilities**

(Based on the assessment of 88 health facilities in the 3 departments)



Source: [PAHO Health Emergencies Dashboard](#)

<sup>1</sup> Population in departments and communes where an intensity greater than 6 degrees was recorded on the Modified Mercalli Scale.

<sup>2</sup> According to Haiti's civil protection agency (DGPC) sitrep #9

<sup>3</sup> OCHA Situation Report N.1

## **\*\*New information in blue**



### HEALTH FACILITIES

As of August 23, based on the assessment by t of 88 health facilities, 59 have been reported affected – 27 severely damaged and 32 slightly damaged:

Department	Status			Number/ Percentage of assessed health facilities
	Severely damaged	Slightly damaged	Undamaged	
<b>Sud</b>	16	21	10	47 (78%)
<b>Grand'Anse</b>	9	6	17	32 (60%)
<b>Nippes</b>	2	5	2	9 (30%)

- In the affected departments, health sector evaluators are carrying out assessments to gather data on injured patients (hospitalizations, types of injuries and demographics) and the degree of damage to health facilities and needs.
- The Ministry of Health has temporarily set up a medical tent at Les Cayes airport to attend and triage patients: severely injured are transferred to University Hospital of Mirebalais by ambulance.
- The Ministry of Health stated last Friday that the deployment of medical teams must be subject to prior approval, and the specific priorities at this time are:
  - Specialized surgical care, preferably with a capacity for post-surgical hospitalization management (surgical cell / orthopedic surgery cell and / or type 2 EMT).
  - Comprehensive trauma care to support the surgical capacities of health facilities (EMT T1 Fixed with high capacity of orthopedic trauma care).
  - Deployment of type 1 mobile teams is not requested at this time.
- Operative health facilities in the affected departments are working at full capacity. They are waiting for reinforcement /support with personnel and equipment.
- Water problems in health facilities in the communes outside Les Cayes.
- Some affected hospitals are functioning on generator power and have limited fuel supplies.<sup>4</sup>
- Increased risk of maternal and newborn deaths, as maternity and surgical wards are not functional for safe deliveries and caesarean section. Temporary measures are needed to reduce the risks faced by pregnant women. <sup>5</sup>

### **INFRASTRUCTURE**

- According to the DGPC and IOM it is estimated that 8,324 people are displaced as a result of the earthquake, mainly in 26 shelters (15 in the Sud and 11 in Nippes).
- Main roads are accessible (Port au Prince – Les Cayes – Jeremie). Nevertheless, security constraints are currently threatening road access, and moving in convoys is recommended when departing from the capital.
- The Dumarsais Estimé bridge, one of the main bridges in the Grand'Anse department suffered structural damages. The Ministry of Public Works, Transport and Communication has prohibited crossing and is planning to provide a detour and a temporary passage to re-establish the river crossing.
- The main electricity plant in Sud department is shut down because two engines were damaged by the earthquake.

<sup>4</sup> OCHA Situation Report N.1

<sup>5</sup> OCHA Situation Report N.1



## NEEDS

- Health sector needs:
  - Medical personnel, medicines, and medical supplies (anesthetic drugs, orthopedic external fixators, plaques, etc).
  - Logistical support for the delivery of materials, deployment of people and transfer of patients.
  - Financial and logistic resources to carry out operation on COVID-19, WASH, patient transferal, mental health in short and medium term.
  - WASH assessment and operations in health institutions and shelters.
  - Implementation of prevention control of communicable diseases.
  - Mental health and psycho-social assistance.
  - Support and coordination with the National Ambulance Center (CAN).
  - Rehabilitation of disabled people following the earthquake.



## RESPONSE

### GOVERNMENT RESPONSE:

- The Ministry of Public Health and Population (MSPP), with the support of PAHO, held the first meeting with 12 health sector partners and provided an update of the situation, report of needs, and encouraged coordination.
- Ministry of Health is deploying structural engineers to assess the safety and integrity of the affected health facilities.
- The National EOC continues strengthening its logistical and strategic capacity to deliver to Sud department and to accelerate assistance to the population.
  - The maritime transport service is available for the transport of humanitarian aid from Varreux to Carrefour; and affected ports in the south are being repaired to be operational next week.
  - The General Directorate of Haitian National Police is working to improve escorts to accompany humanitarian convoys.
- Civil Protection continues working on speeding up the process of channeling aid to the affected areas. The priority needs are shelter, health, water, and food. The next operations will be conducted with significant support from the US army.
- The Ministry of Health (MSPP) held the second health cluster coordination meeting with the support of PAHO/WHO where 38 organization participated. The MSPP presented a summary of the health sector's situation, and gave recommendations to health partners, specifically regarding the deployment of EMT's and the transfer of patient coordination.

### PAHO RESPONSE:

- MSPP/PAHO deployed 3 teams in the Sud department to conduct rapid assessments of health institutions and set-up a data reporting system.
- PAHO/WHO staff will be deployed to the Grand'Anse and Nippes departments to support health sector coordination at departmental levels.
- Support the operations of the national Health EOC and the health cluster.
- Deployment of PAHO'S Regional Response Team Specialist to support coordination of the response and emergency projects).
- Coordination of the upcoming deployment of additional PAHO Regional Response Team Specialists (cluster coordination, administrative support, emergency medical coordination, logistics, among others).
- A joint initiative of the National Laboratory of Public Health (LNSP), Directorate of Epidemiology, Laboratories and Research (DELRL) and PAHO will deploy a team of experts to the affected areas to set-up syndromic surveillance in shelters along with rapid testing for COVID-19 and malaria, and sampling watery diarrheas with Cary Blairs.
- PAHO team, in coordination with the National Laboratory of Public Health (LNSP), will visit the labs of

---

Hospital Immaculée Conception and St Boniface Hospitals in les Cayes (Sud) and St Antoine de Jérémie Hospital (Grand'Anse) and the St. Therese de Miragoâne Hospital (Nippes) to strengthen their lab's diagnostic capacities to detect epidemic-prone infectious diseases.

- **EMT:**
  - PAHO EMT Secretariat is in permanent contact with the regional and international EMT network mapping their availability and supporting the coordination of deployments.
  - The MSPP has established the CICOM (Cellule d'information et de coordination médicale) to coordinate all the EMT offers, and the deployment of those teams accepted.
  - Virtual CICOM Platform has been activated to support the mapping and coordination of the response.
  - Deployment: 7 EMTs have been deployed, 4 will arrive in the following days and 15 are monitoring/stand-by. (See Annex 1 for details).
  - Samaritan's Purse (USA) EMT T2 (1 surgical room and 36 inpatient beds) located in Les Cayes is already active and acting as a reference surgical mobile hospital in the area.
- **Resource mobilization:**
  - In coordination with IFRC, PAHO is mobilizing 3 tons of medicines and supplies (1 medicine kit, 1 hurricane kit, several tents, shades, and illumination kits, among other supplies) which arrived on August 19.

#### **OTHER AGENCIES RESPONSE:**

- **MSF:**
  - Deployed a team to Jérémie, Grand'Anse department, to provide care to affected population as well as medical supplies.
  - Deployed a team to provide medical care in Sud and Ouest departments, and medical attention to referred patients from other health facilities.
  - Carried out an assessment of the impact of the storm in Port-à-Piment and will assess more secluded areas shortly (i.e. Rendell).
- **UNFPA:** Supporting the Sud Departmental Health Directorate to carry out an assessment on sexual and reproductive health and an evaluation of its health institutions and their capacity to provide basic emergency obstetric and neonatal care to for adolescents, girls, and women in the affected departments and to provide support to certain referral hospitals.
- **US Army:** Planning a 14-day mass deployment (by air and boat) to bring humanitarian aid to the affected departments, including EMTs registered with the MSPP who require support and medicines and medical supplies. They will also deploy field hospitals to 4 locations amongst the following 6 options given by the MSPP Camp-Perrin and Maniche (Sud), Dame Marie and Pestel (Grand' Anse), l'Asile and Baradères (Nippes).
- **UNICEF:** Provided medical supplies to Hospital Immaculée Conception and OFATMA in Les Cayes.

## Annex 1

### EMERGENCY MEDICAL TEAMS DEPLOYED

EMT ORGANIZATION	COUNTRY	TYPE	CAPACITY	DATE OF ARRIVAL	LOCATION
SAMARITAN PURSE	USA	EMT T2	Outpatient Care for 100 pat/day 1 surgical room 36 inpatients beds	August 18 <sup>th</sup>	Les Cayes (close to American University of the Caribbean)
CMAT	CAN	EMT Assessment Team	Field Assessment Support of MEDEVAC coordination	August 15 <sup>th</sup>	Les Cayes (multiple locations)
ISAR	GER	EMT T1F	Outpatient Care for 100 pat/day	August 18 <sup>th</sup>	Grande Cayemite Island
TEAM RUBICON	USA	EMT T1M	Outpatient Care for 50 pat/day	August 18 <sup>th</sup>	Les Cayes
UKEMT	UK	EMT Assessment Team	Field Medical Assessment including REHAB	August 20 <sup>th</sup>	PaP
POMPIERS DE L'URGENCE INTERNATIONALE	FRA	Medevac Team	Prehospital Medical Transport	August 21 <sup>st</sup>	Maniches (Les Cayes)
HEART TO HEART	USA	National EMT T1M	Outpatient Care for 50 pat/day	August 14 <sup>th</sup>	Maniches (Les Cayes)

### EMERGENCY MEDICAL TEAMS ARRIVING

EMT ORGANIZATION	COUNTRY	TYPE	CAPACITY	ESTIMATED DATE OF ARRIVAL	LOCATION
International Medical Corps	USA	EMT T1 Fixed Trauma	High capacity of orthopedic trauma care Comprehensive trauma care to support the surgical capacities of health facilities Outpatient Care for 100 pat/day	August 24 <sup>th</sup>	TBC
COPAC-MOH	MEX	EMT T1 Fixed Trauma	High capacity of orthopedic trauma care Comprehensive trauma care to support the surgical capacities of health facilities Outpatient Care for 100 pat/day	August 25 <sup>th</sup>	TBC
NORWAY EMT (EU MECHANISM)	NOR	EMT T1 Fixed Trauma	High capacity of orthopedic trauma care Comprehensive trauma care to support the surgical capacities of health facilities Outpatient Care for 100 pat/day	TBC	TBC
EMT SAMU118-PC (EU MECHANISM)	ITA	EMT SPECIALIZED IN SURGERY	Surgical module to provide surgery and trauma care	TBC	TBC

### EMERGENCY MEDICAL TEAMS MONITORING/STAND-BY

EMT ORGANIZATION	COUNTRY	TYPE	CAPACITY	STATUS	
AMERICARES	USA	EMT T1M	Outpatient Care for 50 pat/day	STB-BY	Monitoring the situation EMT offer sent Pending to confirm deployment
MASSACHUSSETS GENERAL HOSPITAL	USA	EMT SPECIALIZED	ICU SUPPORT OF AMCS	STB-BY	Monitoring the situation EMT offer sent Pending to confirm deployment
HUMEDICA	GER	EMT T1F	Outpatient Care for 100 pat/day	STB-BY	Monitoring the situation EMT offer sent Pending to confirm deployment

UKEMT	UK	EMT T2 / SURGICAL TEAM	Pending to confirm type of team	MONIT	Monitoring the situation Pending to offer
IFRC/CANADIAN RED CROSS	CAN	EMT T2 / SURGICAL TEAM	Pending to confirm type of team	MONIT	Monitoring the situation Pending to offer.
FUNDACION BARCO SAN RAFAEL	COL	EMT T1F	Outpatient Care for 100 pat/day	MONIT	Monitoring the situation
JOHANNITER	GER	EMT T1M	Outpatient Care for 50 pat/day	MONIT	Monitoring the situation Pending to offer depending the needs
PCPM EMT	POL	EMT T1F	Outpatient Care for 100 pat/day	MONIT	Monitoring the situation Pending to offer depending the needs
SAMUR-PC	ESP	EMT T1F	Outpatient Care for 100 pat/day	MONIT	Monitoring the situation Pending to offer depending the needs
NEW YORK MEDICS	USA	EMT T1M	Outpatient Care for 50 pat/day	MONIT	Monitoring the situation Pending to offer
SECOURISTES SANS FRONTIERES MEDICAL TEAM	FRAN	EMT T1M	Outpatient Care for 50 pat/day	MONIT	Monitoring the situation Pending to offer
POMPIERS HUMANITAIRES FRANCAIS	FRAN	EMT T1M	Outpatient Care for 50 pat/day	MONIT	Monitoring the situation Pending to offer
HUMANITY FIRST	CAN	EMT T1F	Outpatient Care for 50 pat/day	MONIT	Monitoring the situation Pending to offer
ASB GERMANY	GER	EMT T1M	Outpatient Care for 50 pat/day	MONIT	Monitoring the situation Pending to offer
CADUS EMT	GER	EMT T1M	Outpatient Care for 50 pat/day	MONIT	Monitoring the situation Pending to offer