

Region of the Americas Update

3 PM WDC. 23 November 2020

Last 24 hours

199,949	Additional cases
1,772	Additional deaths
0.81%	Relative increase in cases
0.25%	Relative increase in deaths
32	Countries/territories reporting new cases
21	Countries/territories reporting new deaths

Highest numbers of cases & deaths in the last 24 hrs

Cases (≥ 1,000)

United States	147,098
Brazil	18,615
Mexico	9,187
Colombia	7,924
Canada	4,792
Argentina	4,184
Peru	1,589
Chile	1,440
Panama	1,206

Deaths (≥ 100)

United States	867
Mexico	303
Brazil	194
Colombia	183

Region of the Americas

25,015,372 cases

702,584 deaths

Global

58,625,630 cases

1,386,990 deaths

216

countries/areas/territories affected

Total cases, deaths & CFR (%) among PAHO countries/territories with ≥ 10,000 cumulative cases.

Country/Territory	Cases	Deaths	CFR (%)
United States of America	12,119,654	254,798	2.1%
Brazil	6,071,401	169,183	2.8%
Argentina	1,370,366	37,002	2.7%
Colombia	1,248,417	35,287	2.8%
Mexico	1,041,875	101,676	9.8%
Peru	949,670	35,595	3.7%
Chile	542,080	15,106	2.8%
Canada	330,503	11,455	3.5%
Ecuador	185,944	13,225	7.1%
Panama	154,783	2,957	1.9%
Bolivia	143,978	8,907	6.2%
Dominican Republic	138,829	2,311	1.7%
Costa Rica	129,418	1,608	1.2%
Guatemala	118,722	4,092	3.4%
Honduras	104,915	2,859	2.7%
Venezuela	99,835	871	0.9%
Paraguay	76,476	1,657	2.2%
Puerto Rico	48,200	1,032	2.1%
El Salvador	37,562	1,081	2.9%
French Guiana	11,042	70	0.6%

Region of the Americas – Highlights

- As of 23 November, confirmed **COVID-19 cases have surpassed 25,000,000 in the Region of the Americas**
- As of 23 November, non-resident foreigners may enter Chile** via the Santiago international airport. [President Piñera announced the reopening of the border at Arturo Merino Benítez Airport](#) on 22 November and presented the first phase of the reopening plan which may be gradually expanded, according to epidemiological conditions.
- [Assessment of 135 794 Pediatric Patients Tested for Severe Acute Respiratory Syndrome Coronavirus 2 Across the United States](#), published in **JAMA Pediatrics**, found that identification of SARS-CoV-2 was associated with Black, Hispanic, and Asian race/ethnicity and non-respiratory chronic medical conditions. Additionally, Kawasaki disease diagnosis was not an effective proxy for multisystem inflammatory syndrome of childhood.

SPOTLIGHT – COVID-19 in Colombia

From the [Weekly Epidemiological Bulletin, National Health Institute, Colombia, Epidemiological week 46, 8 to 14 November, 2020](#):

Confirmed cases, Positivity, and Incidence: As of 19 November, 1,225,490 cases of COVID-19 were laboratory confirmed in Colombia between 38 territorial entities (departments and districts), affecting 1,102 municipalities. The cumulative incidence of COVID-19 is 432.9 cases per 100,000 population. As of 19 November, there were 55,541 active cases of COVID-19, 66.4% (36,856 cases) of which were reported in 14 municipalities and 3 districts: Bogotá, Medellín, Cali, Manizales, Bucaramanga, Valledupar, Pereira, Cúcuta, Bello, Armenia, Villavicencio, Popayán, Barranquilla, Ibagué, Pasto, Floridablanca and Florencia.

Geographic Distribution: The highest incidences of active cases per 100,000 population are reported in the following municipalities: Pijao - Quindío (820.2 cases), Salento - Quindío (713.6 cases), El Carmen de Atrato - Chocó (365.3 cases), Manizales - Caldas (362.7 cases), Marulanda - Caldas (314.5 cases), Sutatausa - Cundinamarca (310.5 cases), Florencia - Caquetá (288.4 cases), Tunja - Boyacá (257.7 cases), Monguí - Boyacá (256.3 cases) and Caldas - Antioquia (252.9 cases). (See **Figure 1.**) During the period from 18 October and 14 November, 87.9% (968) municipalities had active COVID-19 cases.

Demographic Information; The average age of active cases is 42.8 years and 49.7% (27,580) of total cases occurred among people between the ages of 15 and 44 years.

Hospitalizations: Of currently active cases as of 19 November, 69.0% (38,329 cases) were in their home residence, while 27.3% (15,177 cases) were hospitalized, and 3.7% (2,035 cases) were hospitalized in the intensive care unit.

Figure 2. COVID-19 Mortality by Territorial Entity, Colombia, from EW 43 to 46 of 2020

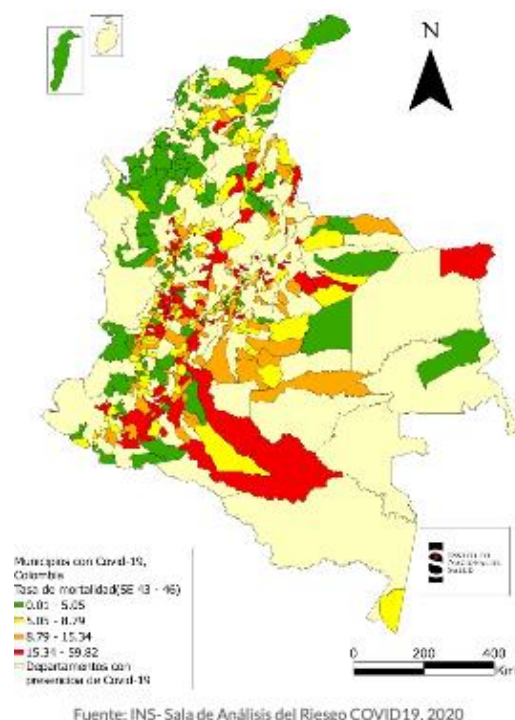
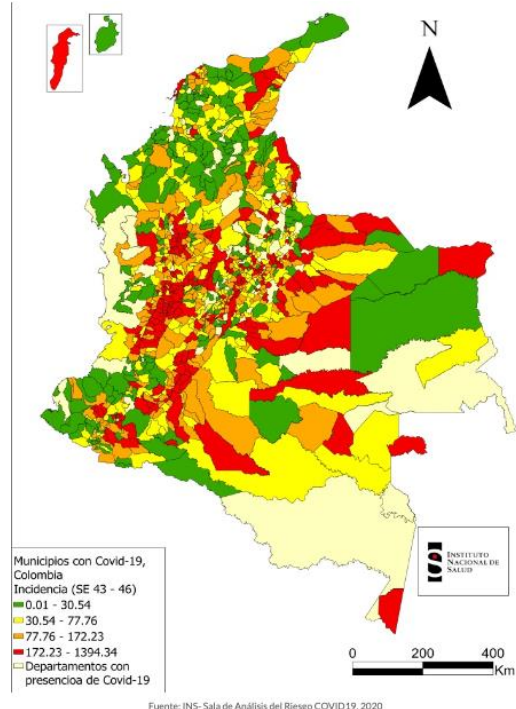
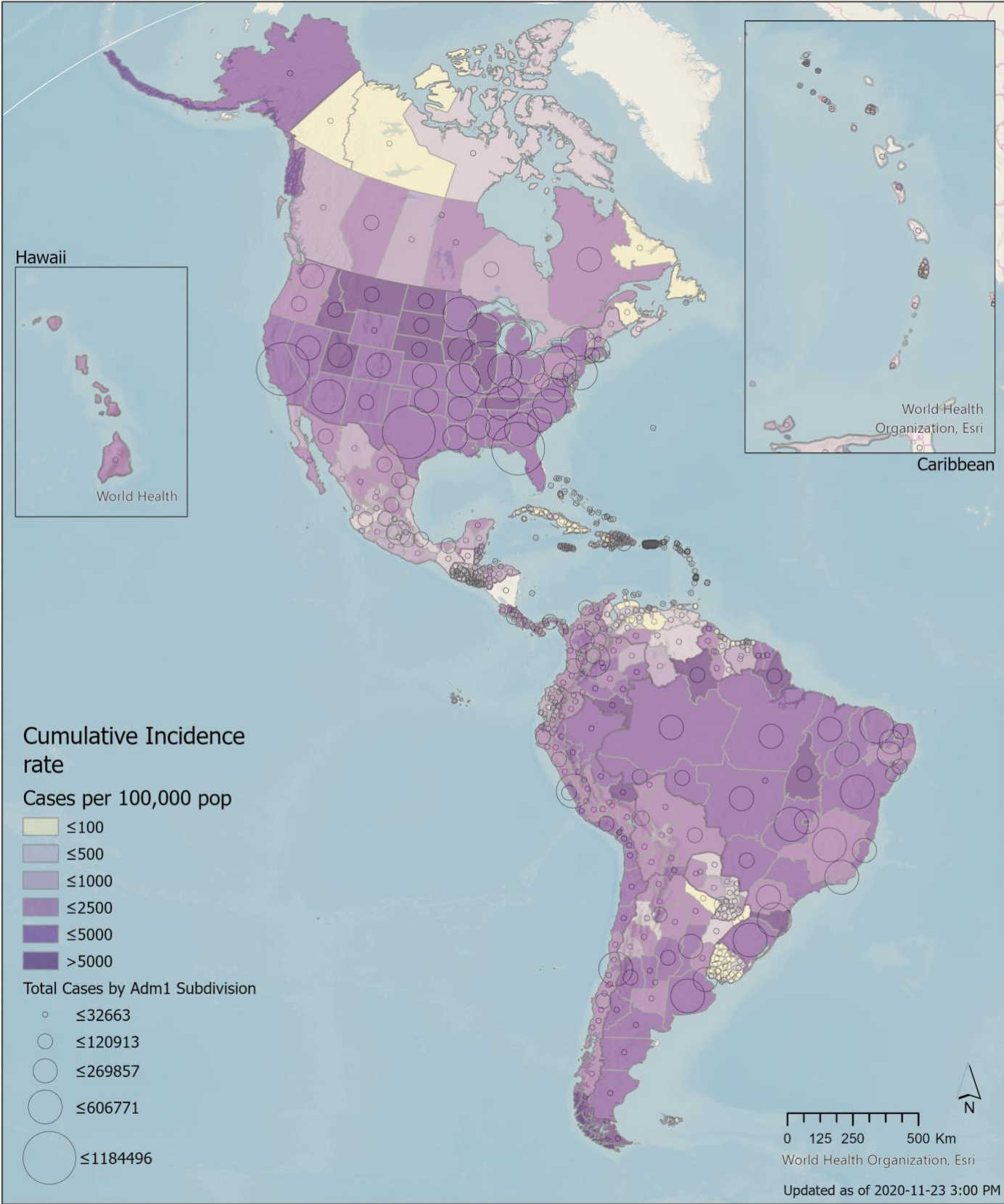


Figure 1. Incidence of Confirmed COVID-19 Cases by Territorial Entity, Colombia, from EW 43 to 46 of 2020

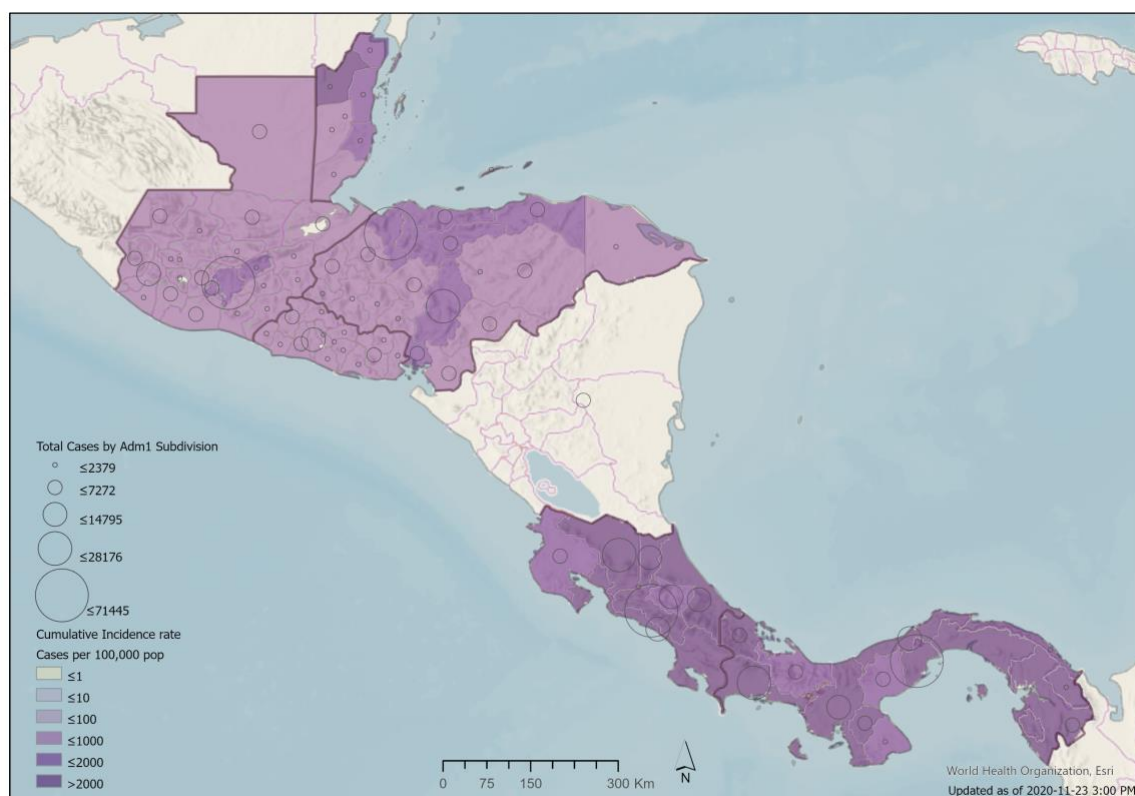


Deaths: As of 19 November, 34,761 COVID-19 deaths were reported from 38 territorial entities (departments and districts). 67.3% of deaths were reported between: Bogotá, (23.6%), Antioquia, (10.8%) Cali (6.1%), Santander (5.5%), Barranquilla (5.0 %), Córdoba (4.7%), Atlántico (4.1%), Cundinamarca (3.9%) and Norte de Santander (3.6%). Between 18 October and 14 November, 4,623 deaths were reported; resulting in a mortality rate of 9.2 deaths per 100,000 population. The highest mortality rates (per 100,000 population) were reported in the following municipalities during the period from 18 October to 14 November: Chipaque - Cundinamarca (59.8 deaths), Panqueba - Boyacá (59.2 deaths), Quetame - Cundinamarca (56.6 deaths), Neiva - Huila (50.9 deaths), Natagaima - Tolima (48.0 deaths), Monguí - Boyacá (46.7 deaths) and Briceño - Boyacá (46.3 deaths). (See **Figure 2.**)

Map 1. Reported number of cumulative COVID-19 cases in the Region of the Americas and corresponding incidence rate (per 100,000 persons) by country/territory. As of 23 November 2020.

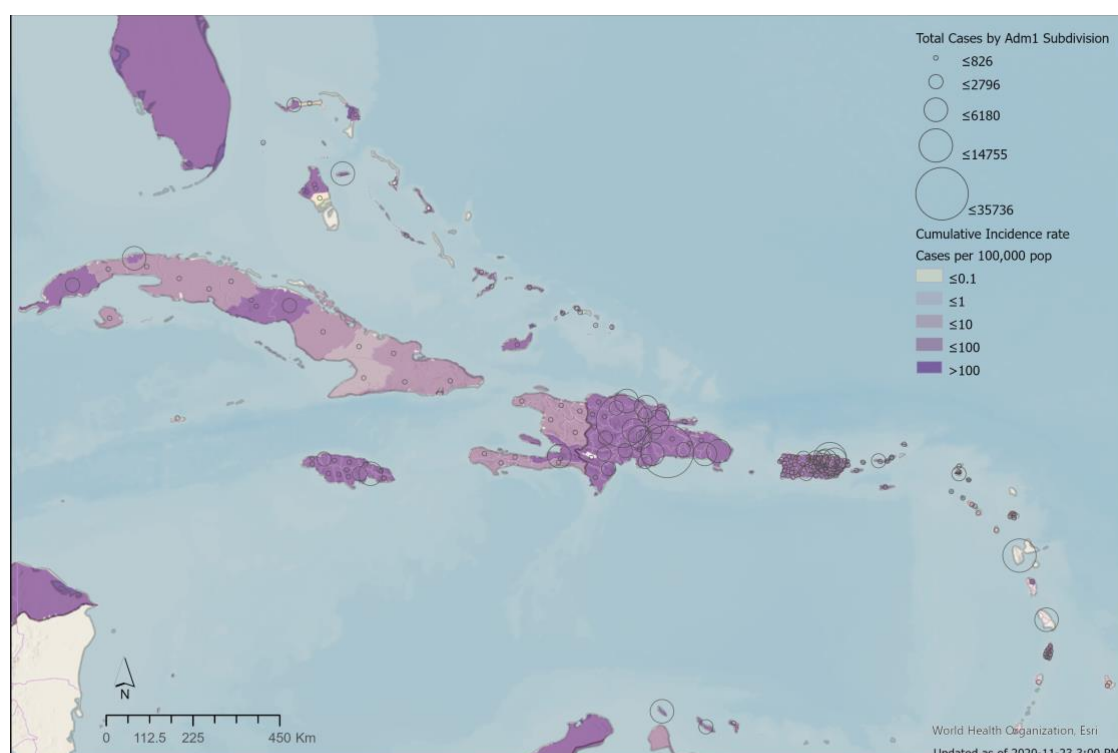


Map 2. Reported number of cumulative COVID-19 cases in the Central American sub-region and corresponding incidence rate (per 100,000 persons) by country/territory (sub-national level). As of 23 November 2020.



© Pan American Health Organization-World Health Organization 2020. All rights reserved.
The designations employed and the presentation of the material in these maps do not imply the expression of any opinion whatsoever on the part of the Secretariat of the Pan American Health Organization concerning the legal status of any country, territory, city or area or of its authorities, or concerning the delimitation of its frontiers or boundaries. Dotted and dashed lines on maps represent approximate border lines for which there may not yet be full agreement.

Map 3. Reported number of cumulative COVID-19 cases in the Caribbean sub-region and corresponding incidence rate (per 100,000 persons) by country/territory (sub-national level). As of 23 November 2020.



© Pan American Health Organization-World Health Organization 2020. All rights reserved.
The designations employed and the presentation of the material in these maps do not imply the expression of any opinion whatsoever on the part of the Secretariat of the Pan American Health Organization concerning the legal status of any country, territory, city or area or of its authorities, or concerning the delimitation of its frontiers or boundaries. Dotted and dashed lines on maps represent approximate border lines for which there may not yet be full agreement.

Cumulative COVID-19 cases and deaths reported by countries and territories in the Americas, as of 23 November 2020

Updated as of 3 PM

Sub-Region	Country/Territory	Cases	Deaths	Recovered	% Relative Increase in Cases	Transmission Type
North America	Canada	330,503	11,455	264,049	1%	Community transmission
	Mexico	1,041,875	101,676	779,104	1%	Community transmission
	United States of America (the)	12,119,654	254,798	4,485,602	1%	Community transmission
	Subtotal	13,492,032	367,929	5,528,755	1%	
Central America	Belize	5,183	116	2,842	1%	Community transmission
	Costa Rica	129,418	1,608	79,372	0%	Community transmission
	El Salvador	37,562	1,081	34,297	0%	Community transmission
	Guatemala	118,722	4,092	107,819	0%	Community transmission
	Honduras	104,915	2,859	46,475	0%	Community transmission
	Nicaragua	4,583	159	4,360	0%	Community transmission
	Panama	154,783	2,957	135,962	1%	Community transmission
	Subtotal	555,166	12,872	411,127	0%	
South America	Argentina	1,370,366	37,002	1,195,492	0%	Community transmission
	Bolivia (the Plurinational State of)	143,978	8,907	119,338	0%	Community transmission
	Brazil	6,071,401	169,183	5,432,505	0%	Community transmission
	Chile	542,080	15,106	517,524	0%	Community transmission
	Colombia	1,248,417	35,287	1,150,932	1%	Community transmission
	Ecuador	185,944	13,225	164,009	0%	Community transmission
	Paraguay	76,476	1,657	54,491	1%	Community transmission
	Peru	949,670	35,595	879,439	0%	Community transmission
	Uruguay	4,699	71	3,679	3%	Clusters of cases
	Venezuela (Bolivarian Republic of)	99,835	871	94,658	0%	Community transmission
	Subtotal	10,692,866	316,904	9,612,067	0%	
Caribbean and Atlantic Ocean Islands	Anguilla	4		3	0%	Sporadic cases
	Antigua and Barbuda	139	4	128	0%	Sporadic cases
	Aruba	4,731	45	4,596	1%	Community transmission
	Bahamas (the)	7,431	163	5,652	0%	Clusters of cases
	Barbados	259	7	241	0%	Clusters of cases
	Bermuda	227	9	200	0%	Sporadic cases
	Bonaire	142	3	136	2%	Sporadic cases
	Cayman Islands	261	2	245	0%	Sporadic cases
	Cuba	7,879	132	7,356	0%	Clusters of cases
	Curacao	1,749	3	1,004	12%	Community transmission
	Dominica	77		63	0%	Clusters of cases
	Dominican Republic (the)	138,829	2,311	112,882	0%	Community transmission
	Falkland Islands (the) [Malvinas]	16		13	0%	Sporadic cases
	French Guiana	11,042	70	9,995	0%	Community transmission
	Grenada	41		30	0%	Sporadic cases
	Guadeloupe	8,225	144	2,242	0%	Community transmission
	Guyana	5,133	143	4,019	1%	Clusters of cases
	Haiti	9,224	232	7,886	0%	Community transmission
	Jamaica	10,343	239	5,518	1%	Community transmission
	Martinique	5,091	39	98	0%	Community transmission
	Montserrat	13	1	11	0%	No Cases
	Puerto Rico	48,200	1,032	0	2%	Community transmission
	Saba	5		5	0%	No Cases
	Saint Barthelemy	127		94	0%	Sporadic cases
	Saint Kitts and Nevis	20		19	0%	Sporadic cases
	Saint Lucia	223	2	106	9%	Clusters of cases
	Saint Martin	690	12	598	0%	Community transmission
	Saint Pierre and Miquelon	14		12	0%	Sporadic cases
	Saint Vincent and the Grenadines	84		78	0%	Sporadic cases
	Sint Eustatius	14		14	0%	No Cases
	Sint Maarten	1,007	25	890	3%	Community transmission
	Suriname	5,296	116	5,168	0%	Sporadic cases
	Trinidad and Tobago	6,450	115	5,610	2%	Community transmission
	Turks and Caicos	746	6	700	0%	Clusters of cases
	Virgin Islands (UK)	72	1	71	0%	Clusters of Cases
	Virgin Islands (US)	1,504	23	1,407	0%	Community transmission
	Subtotal	275,308	4,879	177,090	1%	
Total		25,015,372	702,584	15,729,039	1%	

Table notes on the next page

NOTES: Case and death counts may include both confirmed and probable classifications depending on the reporting Member State.

Recovered counts as indicated and defined by reporting Member States.

Antibody tests, including rapid diagnostic tests (RDTs) based on antibody detection, are not recommended for use by PAHO/WHO in clinical diagnosis. Antigen-detecting RDTs may be used following the WHO 11 September 2020 Guidance, available at: <https://bit.ly/2FxK2fs>.

Data is updated on an approximately semi-weekly to weekly basis for Guadeloupe, Martinique, Nicaragua, Saint Barthelemy, Saint Martin, and Saint Pierre and Miquelon.

As of 11 November 2020, the previously aggregated Bonaire, Saba and Sint Eustatius are now being presented separately in the table.

Bahamas: According to a 23 November Bahamas Ministry of Health (MoH) publication, there are a total of 22 additional deaths under investigation, available at: <https://bit.ly/3kYZfod>

Ecuador: According to a 6 September Ecuador Ministry of Public Health press release, only cases confirmed by RT-PCR will be reported; previously, cases who tested positive by either RT-PCR or RDTs were reported, resulting in the exclusion of 8,956 cases. Available at: <https://bit.ly/3h2EWEA>

Jamaica: According to a 23 November Jamaica Ministry of Health and Wellness press release, there are a total of 33 additional deaths under investigation, available at: <https://bit.ly/39aUN3Q>

Nicaragua: Please note there are discrepancies with the data published by the Citizen's Observatory COVID-19 Nicaragua as of 18 November (available at: <https://bit.ly/2T31cEN>).

Peru: Aggregated case total as reported by the Peru MoH; disaggregated data is (211,053 by RT-PCR + 737,028 by RDTs). Antibody tests, including RDTs based on antibody detection, are not recommended for use by PAHO/WHO in clinical diagnosis. Antigen-detecting RDTs may be used following the WHO 11 September 2020 Guidance, available at: <https://bit.ly/2FxK2fs>.

Puerto Rico: Aggregated case total as reported by the Puerto Rico Department of Health (DoH); 46,923 were positive by RT-PCR and 1,277 were positive by antigen tests; previously, cases who tested positive by either RT-PCR or serological RDTs were reported, resulting in the exclusion of 33,965 cases. Available at: <https://bit.ly/2VvjksQ>.

United States of America: Case and death counts includes both confirmed and probable classifications, as published on the U.S. Centers for Disease Control and Prevention (US CDC) website on 17 November (for data confirmed at 16:00 EST the previous day). Excludes counts for Guam, Commonwealth of the Northern Marianas, Puerto Rico, and the United States Virgin Islands. Sources: <https://bit.ly/2WJN2dd> and <https://bit.ly/2zUMSZ1>. Recovered counts as reported by state and territorial health authorities, available at the COVID Tracking Project <https://bit.ly/2ztbRC6>.

Uruguay: According to the 22 November 2020 Uruguay Ministry of Public Health report, there was one additional case that tested positive in a foreign national; however, that positive case been excluded from the total case count as they returned to their home country, available at: <https://bit.ly/3nR8lFu>