

Region of the Americas Update

3 PM WDC. 1 December 2020

Last 24 hours

- 210,062** Additional cases
- 2,544** Additional deaths
- 0.79%** Relative increase in cases
- 0.35%** Relative increase in deaths
- 36** Countries /territories reporting new cases
- 25** Countries/territories reporting new deaths

Highest numbers of cases & deaths in the last 24 hrs

Cases (≥ 1,000)

United States	151,204
Brazil	21,138
Colombia	8,430
Canada	7,861
Mexico	6,472
Argentina	5,726
Chile	1,121
Panama	1,077
Peru	1,075

Deaths (≥ 100)

United States	1,235
Brazil	287
Mexico	285
Argentina	257
Colombia	182

Region of the Americas – Highlights

Unofficial sources indicate that hospitals in some parts of [Brazil](#), [Mexico](#), [Paraguay](#), and the [United States](#) have reached 100% occupation rates with some closing due to shortages in staffing. All four countries have been observing an acceleration in cases in the last 2-4 weeks.

In [Paraguay](#), the [Ministry of Health](#) reports that rate of doubling for cases in the last week of November was faster than the previous week - 72 days in contrast to the 80 days reached on November 16. According to projections, at the current rate, Paraguay is likely to reach 100,000 confirmed cases before the end of the year.

In [Brazil](#), the state of [São Paulo](#) announced that all regions of the state will return to the yellow phase until January 4. Activities such as bars, restaurants, gyms, beauty salons, shopping malls, offices, dealerships and street shops are limited by hours and the capacity of the public. The state has been experiencing an increase in cases since early November with nearly 25,000 cases reported in a single day on 12 November after 6 days of epidemiological silence. **PAHO**

Region of the Americas

26,875,671 cases

727,679 deaths

Global

63,056,164 cases

1,467,713 deaths

216

countries/areas/territories affected

Total cases, deaths & CFR (%) among PAHO countries/territories with ≥ 10,000 cumulative cases.

Country/Territory	Cases	Deaths	CFR (%)
United States of America	13,385,755	266,043	2.0%
Brazil	6,335,878	173,120	2.7%
Argentina	1,424,533	38,730	2.7%
Colombia	1,316,806	36,766	2.8%
Mexico	1,113,543	105,940	9.5%
Peru	963,605	35,966	3.7%
Chile	552,864	15,430	2.8%
Canada	378,139	12,130	3.2%
Ecuador	193,673	13,501	7.0%
Panama	165,806	3,079	1.9%
Bolivia	144,708	8,957	6.2%
Dominican Republic	144,302	2,333	1.6%
Costa Rica	139,638	1,726	1.2%
Guatemala	122,774	4,178	3.4%
Honduras	108,253	2,918	2.7%
Venezuela	102,394	897	0.9%
Paraguay	82,424	1,756	2.1%
Puerto Rico	53,320	1,122	2.1%
El Salvador	39,130	1,120	2.9%
French Guiana	11,240	70	0.6%

Spotlight – Cuba – PAHO/WHO Country Office Situation Report #42

30 November 2020.

Current Situation: Since the start of the pandemic up to 1 December, there have been 8,381 cases of COVID-19, including 136 deaths reported in Cuba.

Epidemiological Situation, Week of 22-28 November 2020

During the week of 22-28 November, 387 new cases of COVID-19 were confirmed in Cuba – 131 cases more than in the previous week and an increase of 33.8%) and two deaths were reported.

54% of the cases were autochthonous and imported cases increased to 46% (178 cases) from 19% two weeks ago – a direct result of increase in travelers entering Cuba (**Figure 1**). As a consequence, transmission has resumed in all provinces.

A total of 71,149 RT-PCR tests were performed in the last seven days, 7,996 more than in the week previous – an increase of 11.2%. A total of 1,103,641 tests have been carried out to date for a rate of 9,807 tests per 100,000 population. An average of 10 164RT-PCR was performed daily during the week.

Figure 1: COVID-19 cases by source of infection and date of report. March -28 November 2020. Cuba.

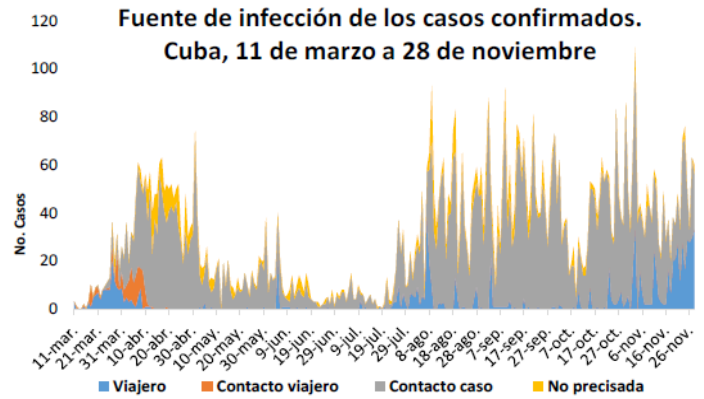
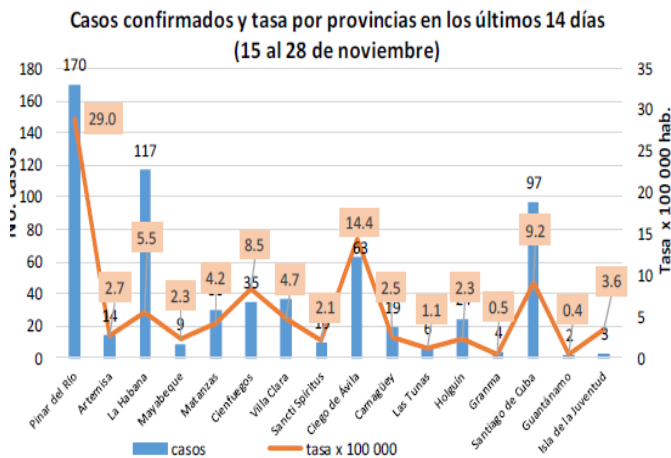


Figure 2: Confirmed COVID-19 cases and incidence rate per 100,000 population by province. Cuba. 1 – 28 November.



The cumulative incidence rate of cases in the country in the last 14 days was 5.7 cases per 100,000 population with the highest rates in the Pinar del Río province, followed by Ciego de Ávila and Santiago de Cuba (**Figure 2**).

Of the total, 71.1 % of the cases detected have been asymptomatic at the time of diagnosis and 46.8% were under 40 years of age, which facilitates increased transmission.

Of the 937 children who have become ill, 94.1% recovered. A total of 86 pregnant and puerperal women were diagnosed of which two remain. No child, pregnant, nor puerperal woman has died from COVID-19.

During the week, severe cases increased slightly, with 0.6% of active cases in severe condition – an average of 2 serious cases and 1 critical case per State in Cuba.

The severity of cases has decreased during the month of November (**Figure 3**), and fatality has remained at 0.5%. (**Figure 4**).

Figure 3: Proportions of severe and critical COVID-19 cases among active cases Cuba 11 March – 28 November. 2020.

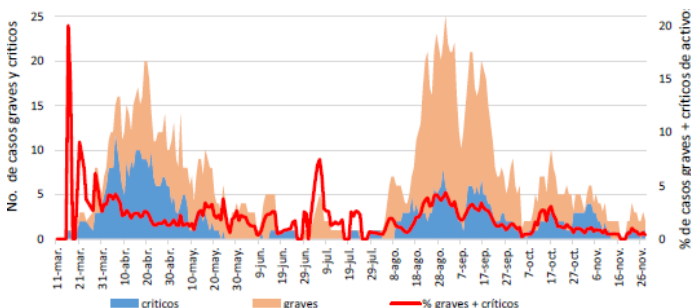
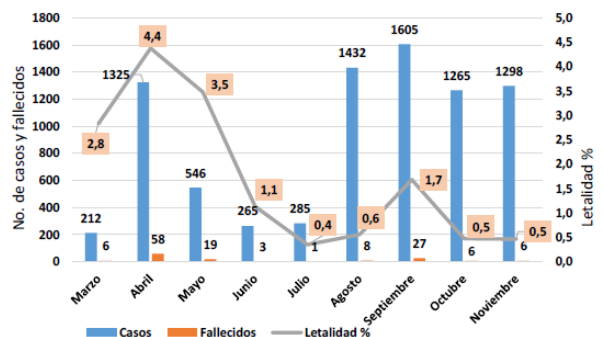
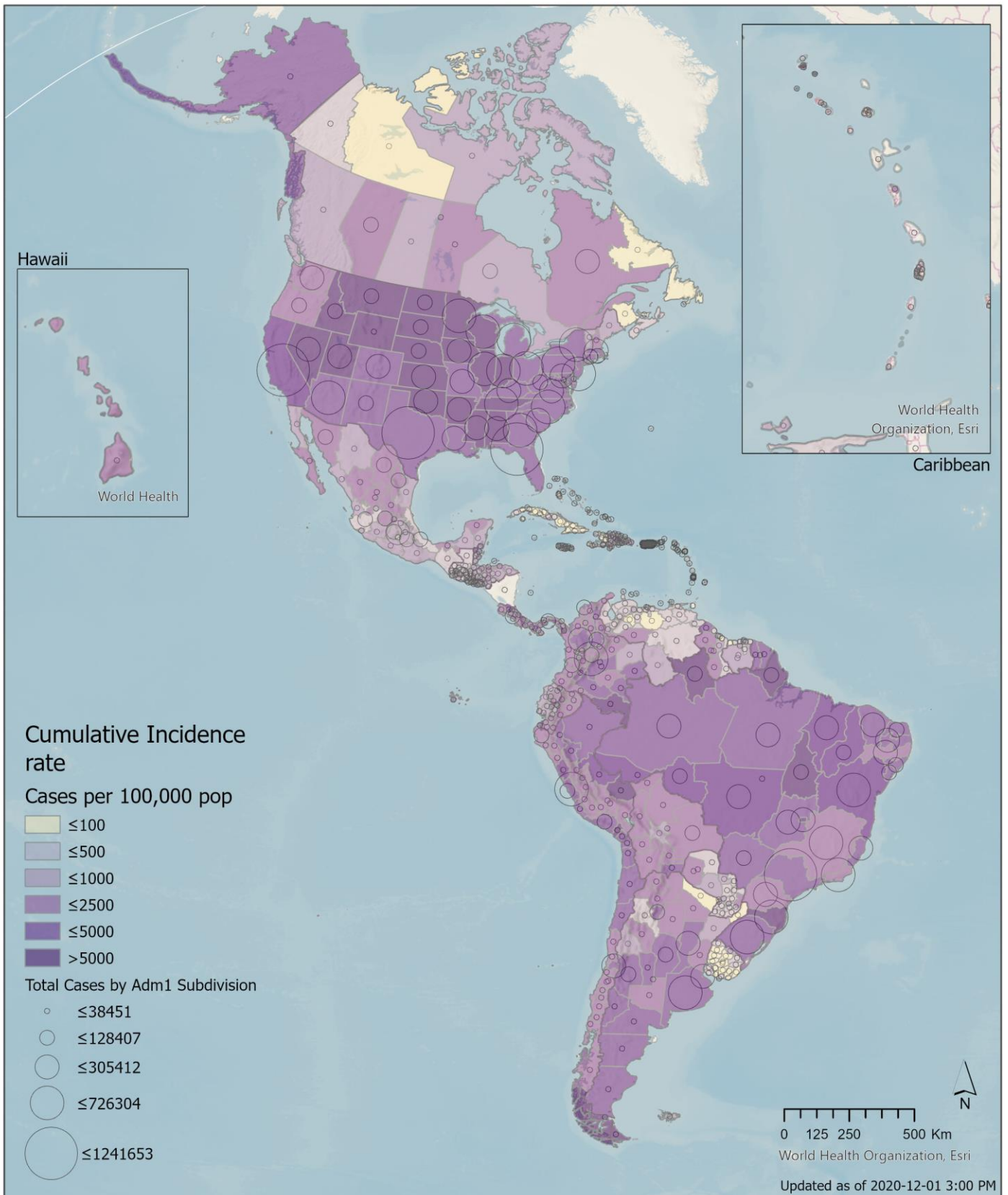


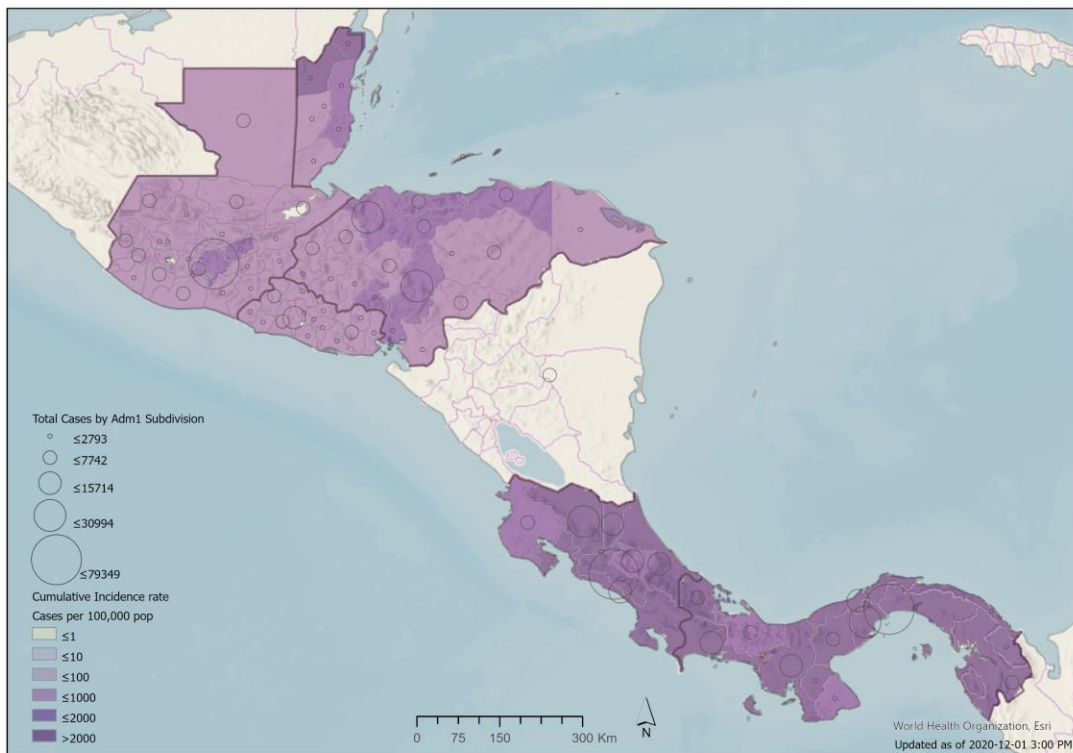
Figure 4: COVID-19 cases, deaths, and lethality (%) by Month. Cuba. 11 March – 28 November 2020. Cuba.



Map 1. Reported number of cumulative COVID-19 cases in the Region of the Americas and corresponding incidence rate (per 100,000 persons) by country/territory. As of 1 December 2020

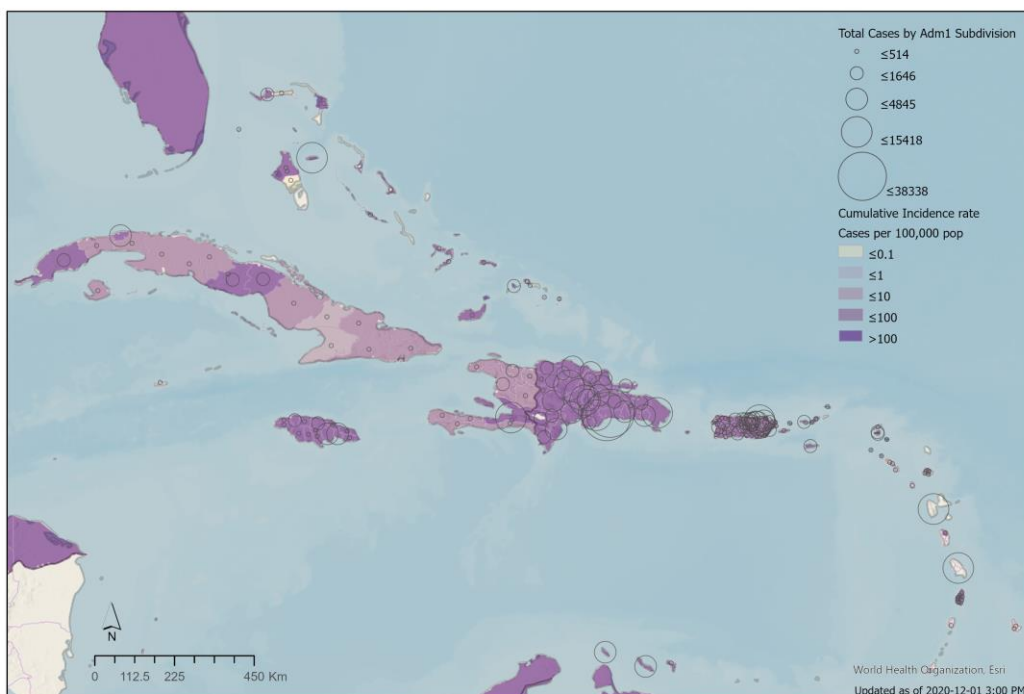


Map 2. Reported number of cumulative COVID-19 cases in the Central American sub-region and corresponding incidence rate (per 100,000 persons) by country/territory (sub-national level). As of 1 December 2020.



© Pan American Health Organization-World Health Organization 2020. All rights reserved.
The designations employed and the presentation of the material in these maps do not imply the expression of any opinion whatsoever on the part of the Secretariat of the Pan American Health Organization concerning the legal status of any country, territory, city or area or of its authorities, or concerning the delimitation of its frontiers or boundaries. Dotted and dashed lines on maps represent approximate border lines for which there may not yet be full agreement.

Map 3. Reported number of cumulative COVID-19 cases in the Caribbean sub-region and corresponding incidence rate (per 100,000 persons) by country/territory (sub-national level). As of 1 December 2020



© Pan American Health Organization-World Health Organization 2020. All rights reserved.
The designations employed and the presentation of the material in these maps do not imply the expression of any opinion whatsoever on the part of the Secretariat of the Pan American Health Organization concerning the legal status of any country, territory, city or area or of its authorities, or concerning the delimitation of its frontiers or boundaries. Dotted and dashed lines on maps represent approximate border lines for which there may not yet be full agreement.

Cumulative COVID-19 cases and deaths reported by countries and territories in the Americas, as of 1 December 2020

Updated as of 3 PM

Sub-Region	Country/Territory	Cases	Deaths	Recovered	% Relative Increase in Cases	Transmission Type
North America	Canada	378,139	12,130	299,972	2%	Community transmission
	Mexico	1,113,543	105,940	823,586	1%	Community transmission
	United States of America (the)	13,385,755	266,043	5,095,884	1%	Community transmission
	Subtotal	14,877,437	384,113	6,219,442	1%	
Central America	Belize	5,854	148	3,151	2%	Community transmission
	Costa Rica	139,638	1,726	87,526	0%	Community transmission
	El Salvador	39,130	1,120	35,839	2%	Community transmission
	Guatemala	122,774	4,178	111,574	1%	Community transmission
	Honduras	108,253	2,918	48,073	0%	Community transmission
	Nicaragua	4,671	161	4,456	1%	Community transmission
	Panama	165,806	3,079	144,462	1%	Community transmission
Subtotal	586,126	13,330	435,081	1%		
South America	Argentina	1,424,533	38,730	1,257,227	0%	Community transmission
	Bolivia (the Plurinational State of)	144,708	8,957	121,702	0%	Community transmission
	Brazil	6,335,878	173,120	5,601,804	0%	Community transmission
	Chile	552,864	15,430	528,034	0%	Community transmission
	Colombia	1,316,806	36,766	1,210,489	1%	Community transmission
	Ecuador	193,673	13,501	169,804	1%	Community transmission
	Paraguay	82,424	1,756	58,453	1%	Community transmission
	Peru	963,605	35,966	894,741	0%	Community transmission
	Uruguay	5,857	77	4,357	2%	Clusters of cases
	Venezuela (Bolivarian Republic of)	102,394	897	97,326	0%	Community transmission
Subtotal	11,122,742	325,200	9,943,937	0%		
Caribbean and Atlantic Ocean Islands	Anguilla	6		4	0%	Sporadic cases
	Antigua and Barbuda	141	4	130	0%	Sporadic cases
	Aruba	4,845	45	4,692	0%	Community transmission
	Bahamas (the)	7,541	163	5,889	0%	Clusters of cases
	Barbados	278	7	255	1%	Clusters of cases
	Bermuda	260	9	214	0%	Clusters of cases
	Bonaire	143	3	138	0%	Sporadic cases
	Cayman Islands	282	2	254	3%	Sporadic cases
	Cuba	8,381	136	7,658	1%	Clusters of cases
	Curacao	2,379	4	1,151	1%	Community transmission
	Dominica	85		73	0%	Clusters of cases
	Dominican Republic (the)	144,302	2,333	115,530	0%	Community transmission
	Falkland Islands (the) [Malvinas]	17		13	0%	Sporadic cases
	French Guiana	11,240	70	9,995	0%	Community transmission
	Grenada	41		30	0%	Sporadic cases
	Guadeloupe	8,378	149	2,242	0%	Community transmission
	Guyana	5,406	151	4,392	1%	Clusters of cases
	Haiti	9,296	233	8,023	0%	Community transmission
	Jamaica	10,810	258	6,364	0%	Community transmission
	Martinique	5,486	40	98	0%	Community transmission
	Montserrat	13	1	13	0%	No Cases
	Puerto Rico	53,320	1,122	0	1%	Community transmission
	Saba	5		5	0%	No Cases
	Saint Barthelemy	152		94	0%	Sporadic cases
	Saint Kitts and Nevis	22		19	0%	Sporadic cases
	Saint Lucia	259	2	131	1%	Clusters of cases
	Saint Martin	744	12	598	0%	Community transmission
	Saint Pierre and Miquelon	14		14	0%	Sporadic cases
	Saint Vincent and the Grenadines	85		80	0%	Sporadic cases
	Sint Eustatius	14		14	0%	No Cases
	Sint Maarten	1,069	25	964	0%	Community transmission
	Suriname	5,312	117	5,194	0%	Sporadic cases
Trinidad and Tobago	6,669	120	5,771	0%	Community transmission	
Turks and Caicos	748	6	717	0%	Clusters of cases	
Virgin Islands (UK)	73	1	71	0%	Clusters of Cases	
Virgin Islands (US)	1,550	23	1,493	0%	Community transmission	
Subtotal	289,366	5,036	182,323	0%		
Total	26,875,671	727,679	16,780,783	1%		

Table notes on the next page

NOTES: Case and death counts may include both confirmed and probable classifications depending on the reporting Member State.

- Recovered counts as indicated and defined by reporting Member States.
- Antibody tests, including rapid diagnostic tests (RDTs) based on antibody detection, are not recommended for use by PAHO/WHO in clinical diagnosis. Antigen-detecting RDTs may be used following the WHO 11 September 2020 Guidance, available at: <https://bit.ly/2FxFK2fs>.
- Data is updated on an approximately semi-weekly to weekly basis for Guadeloupe, Martinique, Nicaragua, Saint Barthelemy, Saint Martin, and Saint Pierre and Miquelon.
- As of 11 November 2020, the previously aggregated Bonaire, Saba and Sint Eustatius are now being presented separately in the table. "

Bahamas: According to a 1 December Bahamas Ministry of Health (MoH) publication, there are a total of 23 additional deaths under investigation, available at: <https://bit.ly/36anPyF>

Ecuador: According to a 6 September Ecuador Ministry of Public Health press release, only cases confirmed by RT-PCR will be reported; previously, cases who tested positive by either RT-PCR or RDTs were reported, resulting in the exclusion of 8,956 cases. Available at: <https://bit.ly/3h2EWEA>

Jamaica: According to a 1 December Jamaica Ministry of Health and Wellness press release, there are a total of 29 additional deaths under investigation, available at: <https://bit.ly/39aUN3Q>

Nicaragua: Please note there are discrepancies with the data published by the Citizen's Observatory COVID-19 Nicaragua as of 25 November (available at: <https://bit.ly/2T31cEN>).

Peru: Aggregated case total as reported by the Peru MoH; disaggregated data is (214,287 by RT-PCR + 748,243 by RDTs). Antibody tests, including RDTs based on antibody detection, are not recommended for use by PAHO/WHO in clinical diagnosis. Antigen-detecting RDTs may be used following the WHO 11 September 2020 Guidance, available at: <https://bit.ly/2FxFK2fs>.

Puerto Rico: Aggregated case total as reported by the Puerto Rico Department of Health (DoH); 51,647 were positive by RT-PCR and 1,673 were positive by antigen tests; previously, cases who tested positive by either RT-PCR or serological RDTs were reported, resulting in the exclusion of 33,965 cases. Available at: <https://bit.ly/2VvjksQ>

United States of America: Case and death counts includes both confirmed and probable classifications, as published on the U.S. Centers for Disease Control and Prevention (US CDC) website on 1-December (for data confirmed at 16:00 EST the previous day). Excludes counts for Guam, Commonwealth of the Northern Marianas, Puerto Rico, and the United States Virgin Islands. Sources: <https://bit.ly/2WJN2dd> and <https://bit.ly/2zUMSZ1>. Recovered counts as reported by state and territorial health authorities, available at the COVID Tracking Project <https://bit.ly/2ztbRC6>.

Uruguay: According to the 30 November 2020 Uruguay Ministry of Public Health report, there were 8 additional cases that tested positive in foreign nationals; however, the positive cases have been excluded from the total case count as they returned to their home country, available at: <https://bit.ly/2HWyQtS>

DATA ADJUSTMENTS: Differences in the total number of cases, deaths, and/or recovered cases and respective % increases reflect the following adjustment:

Costa Rica: The Costa Rica MoH retrospectively released data for 29 November, indicating 139,099 total cases including 1,715 deaths and 85,639 recovered, this has been retrospectively adjusted in the Americas 30 November 2020 table and the relative increase in cases is based on this adjustment.